

News from Lemhi Regional Land Trust and the Salmon School Garden Project

CONSERVE

Spring 2021

Celebrating Our Roots with Agriculture Week

Since 2021, Lemhi Regional Land Trust (LRLT) has teamed up with a diverse array of partners, all coordinated by the Lemhi County Extension Office, to ensure that every grade in every school in Lemhi County has the opportunity for educational programming as part of Agriculture Week each March. The topics are as diverse and varied as the organizations presenting them and for our part, LRLT Outreach Coordinator, Charli Williams, visited with Pioneer Elementary kindergarten, first and fifth grade classes, along with sixth graders from Salmon Junior-Senior High School.

Kindergartners and the kindergarten - first grade split class learned about chickens and eggs and practiced their matching skills by pairing their newly learned breeds of chickens with what color eggs they lay. To cap off their activity, LRLT Executive Director, Jen Smith visited each class with a chicken, giving them the opportunity to see and pet it if they so chose. Plants were the topic of choice for the first grade classes. Students learned about the parts of the plant, that we can eat all the parts of the plant and even built their very own plants out of vegetables and sampled all the different parts of a plant.

With COVID forcing the cancellation of the traditional fifth grade field trip to the University of Idaho's Nancy M. Cummings Research, Extension and Education Center in Carmen in 2020, the decision was made to have sixth grade join in on this year's fifth grade beef production lessons. Students rotated through stations including calving, nutrition, ruminant digestion and DNA in the beef industry. Charli conducted a simple science experiment allowing the students to extract and view DNA from strawberries, while Dr. Benton Glaze from the University of Idaho talked about DNA, its importance and the role it plays in the beef industry.

Right: First graders build their plants out of a variety of vegetables.

Bottom Left: fifth graders examine the DNA extracted from strawberries.

Bottom Right: LRLT Executive Director, Jen Smith, holds a chicken as the kindergartners take turns petting her.

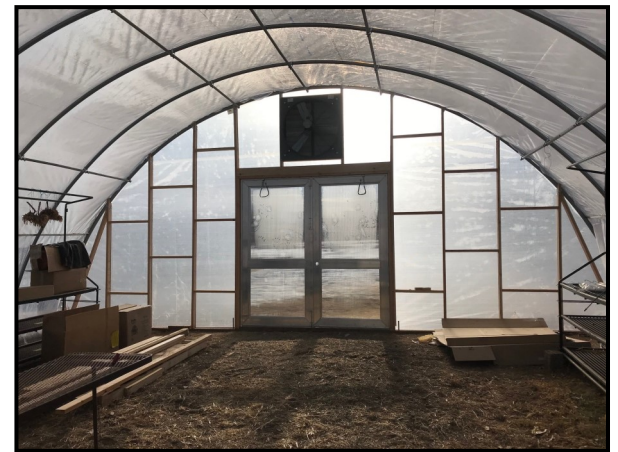


Growing at the Salmon School Garden: from High Tunnel to Greenhouse

In 2017, Dave and Amy Say generously donated a high tunnel to the Salmon School Garden Project (SSGP). With the assistance of the Says, a group of volunteers constructed the high tunnel, which has annually been used for both additional growing and teaching space each year. While the high tunnel was critical for extending the growing season and providing additional growing space, it has not been a substitute for a true greenhouse. While Agriculture Teacher, Katie Cooper, has generously shared space in her greenhouse on the adjoining Salmon School District property, this small structure rapidly becomes overcrowded each spring.

After much research, pricing and discussions, the SSGP committee decided that the best way for the Garden to have a greenhouse of it's own would be to start with the high tunnel structure already in place. With guidance from Jessica McAleese of Swift River Farm, a plan was designed to convert the existing high tunnel into a fully functional heated greenhouse. With snow still on the ground, the next challenge became completing construction in time for the 2021 growing season.

Thanks to the generosity of the late Ken Hill, instead of relying on a group of volunteers, we were able to hire out completion of the conversion. After visiting the Garden and looking at the project, David Yoder with Cabins Plus, agreed to take on the project, but rather than completing the project by himself, he partnered with the local Amish youth to utilize the project as a fundraiser for their future activities. Over the course of two days in early March, with the assistance of Orla Yoder of Tri-State Brothers Roofing and 4-10 youth each day, all of the exterior plastic was replaced, the ends were framed and installation of doors and the heating system was completed. Thanks to their efforts, along with Valleywide Energy and Ray's Heating, Plumbing and Electric, we're excited to have a fully functional greenhouse just in time to for the 2021 growing season!



Special Thanks to:

Amish Youth Program • Anonymous Donor
 Bob & Nancy Russell • Cabins Plus - David Yoder • Ken Hill
 Ray's Heating, Plumbing and Electric
 Tri-State Brothers Roofing - Orla Yoder • Valleywide Energy

Meet the Manager: Max Bonner

Born and raised in Salmon, Max joined the Salmon School Garden Project as the Garden Manager in August 2020. Max learned a love and respect for all things outdoors at an early age. Hiking, camping, fishing, hunting, snowboarding, trail riding, rock hounding, and exploring, his appreciation for our



unique area and community is a constant reminder of how fortunate we are to live and work in Salmon. His interests in gardening and seed propagation have led him to pursue a small local greenhouse operation. Being able to share his knowledge with the community and collaborating with the Salmon School Garden Project has been a beneficial and fulfilling experience. He hopes his experience helps instill a passion for gardening and growing for future generations to come.

Save the Date!

FRIDAY, MAY 14TH
 Salmon School Garden Project
 Greenhouse Dedication
 &
 Plant Sale Preview

5:00 - 7:00: Plant Sale Preview
 6:00: Greenhouse Dedication

Join us for an opportunity to see our new greenhouse and preview the plants that will be available for purchase at the Plant Sale Saturday, May 15th!

Save the Date!

Lemhi  Regional
LAND TRUST

WORKING LANDS CELEBRATION

June 25, 2021

ALEX SHOLES PHOTOGRAPHY

Curious About Habitat Restoration on the Lemhi River?

Have you ever been curious about what goes into the implementation of the habitat restoration projects occurring on the Lemhi River and it's tributaries and what the goals are of these projects? Join us via Zoom on **Thursday, April 29th at 6 p.m.** learn more about what goes into these large scale projects.

RSVP to info@lemhilandtrust.org or (208) 756-8879 for the Zoom link!

LRLT Awarded Grant to Support Land Protection

Lemhi Regional Land Trust was recently awarded a \$77,500 grant to support our land protection program. Funding was provided by the Heart of the Rockies Initiative Land Trust Partnership and the Kendeda Fund as part of Keep it Connected. Keep It

Connected is a strategy by Heart of the Rockies Initiative land trusts to conserve private land critical to retaining wildlife connectivity—the vital ability for wildlife to move between habitats—across the Central Rocky Mountains. Funding will be used for due diligence efforts (e.g., baseline documentation, environmental assessments, appraisal) and cover critical staff time at LRLT. Both of these, but especially staff time, are

often factors limiting our ability to complete land protection projects. To learn more about Keep It Connected visit www.heart-of-rockies.org/keep-it-connected/.



The Best Time to Make a Difference through Charitable Giving is NOW!

The year 2021 offers a unique opportunity for you to support Lemhi Regional Land Trust and the Salmon School Garden!

The Consolidated Appropriations Act (CCA) extends the 2020 CARES Act provisions related to tax deductions for charitable contributions. Take advantage NOW as this opportunity may be short-lived. Without new legislation, incentives will decrease in 2022, reverting to provisions of the Tax Cuts and Jobs Act of 2017.

Individuals who do not itemize can **deduct up to \$300 in cash giving (\$600/couple)** for the 2021 tax year. Those who do itemize, can **deduct up to 100% of adjusted gross income.**



Save the Date!

SATURDAY, MAY 15TH

Salmon School Garden Project

Annual Plant Sale

VEGETABLES & FRUIT:

Tomatoes • Peppers • Eggplant • Cauliflower
Cucumber • Squash • Broccoli • Brussel Sprouts
Onions • Rosemary • Sage • Basil • Cantaloupe
Watermelon

FLOWERS:

Snapdragons • Echinacea • Zinnia • Columbine
Alyssum • Amaranth • Gomphrena • Hollyhock
Marigold • Aster • Sunflower

Upcoming Events

<p>April 15 - 5:30 p.m.</p> <p>Tree Pruning Workshop</p> <p>Contact Lemhi County Extension (208-742-1697) to register</p>	<p>April 29 - 6:00 p.m.</p> <p>Learn About Habitat Restoration in the Upper Lemhi - via Zoom</p> <p>RSVP to Lemhi Regional Land Trust (208-756-8879)</p>	<p>May 14</p> <p>5:00 - 7:00 p.m.</p> <p>Salmon School Garden Project Plant Sale Preview</p> <p>6:00 p.m.</p> <p>Salmon School Garden Project Greenhouse Dedication</p>	<p>May 15</p> <p>Salmon School Garden Project Annual Plant Sale</p>
<p>June - August (Dates TBD)</p> <p>Salmon School Garden Project Weekly Kids' Garden Program</p>	<p>June 25</p> <p>Lemhi Regional Land Trust Working Lands Celebration at Sweetwater Hollow</p>	<p>August (Date TBD)</p> <p>Exploring Hayden Creek with Lemhi Regional Land Trust and the Lemhi County Historical Society</p>	<p>September (Date TBD)</p> <p>Learn to Make Sauerkraut</p>

Lemhi Regional Land Trust
 P.O. Box 871
 Salmon, Idaho 83467

Recipient
 Address
 City, State Zip

LEMHI REGIONAL LAND TRUST

www.lemhilandtrust.org
 105 S. Center Street
 P.O. Box 871
 Salmon, Idaho 83467
 (208)756-8879

Click "Donate" to make a contribution to LRLT!



SALMON SCHOOL GARDEN PROJECT

www.salmonschoolgarden.org
 1309 Minnie Street
 P.O. Box 382
 Salmon, Idaho 83467

Click "Donate Today" to make a contribution to the SSGP!

