

Conserve

News From Lemhi Regional Land Trust & the Salmon School Garden

We Have a Winner!

Laura Hollingshead

We would also like to extend a big thank you to Wild Side Sports for helping us make this possible and everyone who purchased a ticket!



ALEX SHOLES PHOTOGRAPHY

Salmon School Garden Class Spotlight: Pioneer Elementary 4th Grade



Kids deciding what depth to plant their potato.

The Salmon School Garden is already hosting kids! On February 13th and 14th, Mrs. McKinney's and Mrs. Clark's fourth grade classes from the Pioneer Elementary were able to get out of the classroom and into the greenhouse. Their grade is in charge of potatoes! Early in the spring, Shannon Williams, with Lemhi County Extension, and the kids get to run an experiment with red potatoes where they can alter the soil, water, or sunlight while also running a control group to see how the selected variables affect the growth of a potato. As "potato scientists" they decide how they will measure the differences between the treatments and conduct the experiment over the next few weeks.



Learning about nutrients.

Towards the end of the school year in May, the kids will come back to the garden where Shannon will talk about root crops (growing from seed vs. growing from a tuber), the history of potatoes, and plant potatoes in the ground for next year's fourth grade to harvest.



Deciding which experiment to try.

Once the kids have dug the potatoes, they grade and sort the potatoes based off of look, feel, size, and weight. After the potatoes have been graded, Shannon and Tori O'Neal go into the classroom to run starch experiments with kids. This teaches the kids what starch is and shows the importance of starch when storing or cooking a potato. After everything has been completed, the kids get to finish off by eating mashed potatoes!



Working Lands Celebration

Thursday, June 20th - Salmon, Idaho

Dinner - Kids Activities - Online and In-Person Auction



Welcome to Lemhi Regional Land Trust!



Kayla Cook

Office Administrator

Kayla grew up in the Mountains of Idaho. She was raised in the Sawtooths and decided to make the Salmon River Mountains her home. Kayla is an organized and adaptable office administrator with years of experience in various office environments. Her attention to detail, communication and interpersonal skills, along with her excellent time management means that every task is completed efficiently and to the highest possible standards. Within the community, Kayla manages the 12U Peewee Hockey team, she owns and operates her business, Kayla's Cakery, and is a loving mom of two amazing and slightly feral boys!

Design Your Succession Plan:

Ranch Succession Workshop Series

April 16, 23 & 30, 2024 at 6 p.m.

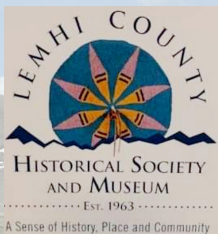
University of Idaho Cummings Center Lecture Hall

RSVP & registration fees due April 8 - SPACE IS LIMITED!



University of Idaho
Extension
Lemhi County

To register, contact Lemhi County Extension at (208)742-1696 or email shannonw@uidaho.edu



LEMHI REGIONAL
Land Trust

Save The Date

Thursday, May 9th, 2024

Come learn about the unique history of Kenney Creek from Dr. Hope Benedict!

New Salmon School Garden Committee Members!



Tina Ruffing

Tina Ruffing is an Idaho native who was raised on a farm in the Magic Valley. She was introduced at an early age to the fun, and hard work, of gardening as well as raising crops and livestock. She pursued a degree in range livestock management at the University of Idaho and has worked for over 30 years as a rangeland management specialist for the US Forest Service. In addition to raising her own small garden at home, Tina enjoys spending time outdoors hiking, fishing, camping and riding her horses. She also enjoys supporting local youth by helping out at the School Garden and participating in activities that support 4-H and FFA participants.



Jannis LeBlanc

Jannis currently serves as the Sacajawea Center's Community Garden Manager and is passionate about small-scale farming. Jannis was a manager for the University of Idaho's Organic Farm in Moscow, Idaho while she earned her Master's degree and has worked as a crawfish farmer in Louisiana. She has also taught at the U of Idaho's McCall Outdoor Science School, at a high adventure scout camp, and for various citizen science programs, teaching science to youth outdoors. Besides volunteering for the Salmon Senior Center's Meals on Wheel Program, she also enjoys watching her two children learn and play in the garden and outdoors year-round.

Upcoming Events

April 14 Salmon School Garden's Soup Fundraiser	April 16, 23, 30 Lemhi Co. Extension Ranch Succession Planning Workshop	May 9 History of Kenney Creek Presentation
May 18 Salmon School Garden's Annual Plant Sale	June 20 Lemhi Regional Land Trust's Working Lands Celebration	June - August Salmon School Garden Kids' Garden Programming

Salmon School Garden

Soup Fundraiser

Monday, April 15th at the Salmon Grange

11 am to 2 pm - By Donation

Potato Soup - Chili - Beef Stew

Rolls & Desserts

Dine in, Take out, or Delivery Available!

Look for order forms in April!





Salmon School Garden ANNUAL PLANT SALE

Saturday, May 18

10 am to 1 pm

1309 Minnie Street (Behind Wild Side Sports)

Plants available

Herbs

Cilantro • Catnip • Basil
Rosemary • Parsley

Fruits

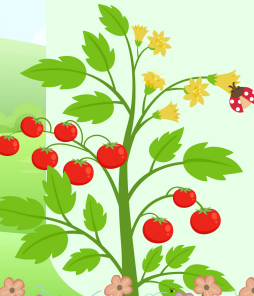
Cantaloupe
Watermelon

Vegetables

Cucumber • Eggplant
Hot & Sweet Peppers
Tomatoes • Salad Blends
Summer & Winter Squash

Flowers

Amaranthus • Zinnia
Marigolds • Nasturtium
Hanging Baskets



Conserve

Winter 2024

Lemhi Regional Land Trust
105 S. Center Street
Salmon, Idaho 83467

Recipient
Address
City, State ZIP

Lemhi Regional Land Trust

www.lemhilandtrust.org
105 S Center Street
Salmon, Idaho 83467
(208)756-8879

Click "Donate" or scan the QR code
below to make a contribution to
LRLT!



Lemhi Regional Land Trust



@lemhilandtrust



Salmon School Garden

www.salmonschoolgarden.org
1309 Minnie Street
P.O. Box 382
Salmon, Idaho 83467

Click "Donate" or scan the QR code
below to make a contribution to the
SSG!



The Salmon School
Garden Project



@salmonschoolgarden

