

# Conserve

News From Lemhi Regional Land Trust & the Salmon School Garden

## The History of Kenney Creek Ranch & Dr. Kenney



Dr. Hope Benedict talks about Dr. Kenney's legendary skeleton.

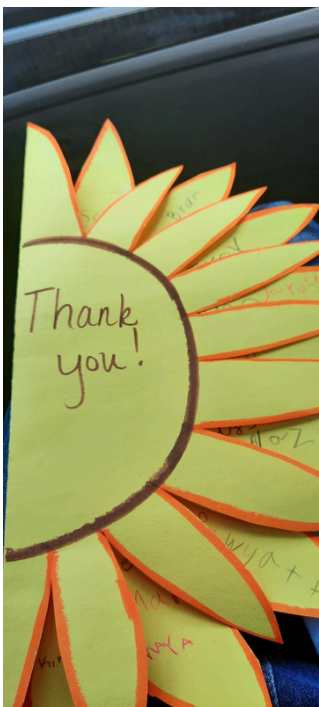
In 2009 when Lemhi Regional Land Trust (LRLT) began purchasing the Kenney Creek Ranch, we learned that in addition to the productive agricultural lands, prime fish and wildlife habitat and stunning views we were protecting, that the Kenney Creek Ranch had a bit of a history. Or rather the ranch's namesake had a bit of a history. Dr. George Kenney came to Lemhi County in 1874 with his wife and three daughters, homesteaded on the ranch and began practicing medicine and a file with some of the history of Dr. Kenney has always lived at the LRLT office, but in May, we decided it was time to share the story of Dr. Kenney with the community.

We teamed up with Dr. Hope Benedict, of the Lemhi County Historical Society, to tell the story of the history of the ranch and Dr. Kenney, while LRLT Executive Director, Charli Williams, talked about LRLT's involvement, the conservation easement and the ranch today. Hope covered the life of Dr. Kenney in depth, including his time fighting in the Civil War, multiple marriages, studying medicine, making his way to Lemhi County and teaching his brother Dwight, who was interested in medicine, about anatomy. Some people would have been foiled by the lack of a skeleton, but not the Kenney brothers, who simply got creative when it came to procuring their skeleton, even getting the head back from a stagecoach driver after it had been packed off by birds.

A huge THANK YOU to Dr. Hope Benedict for her hours of research and assembling all the details of Dr. Kenney's life in such amusing detail! Missed out on learning about Kenney Creek? Look for our next joint event with the Lemhi County Historical Society in spring 2025.

## What's Growing in the Salmon School Garden?

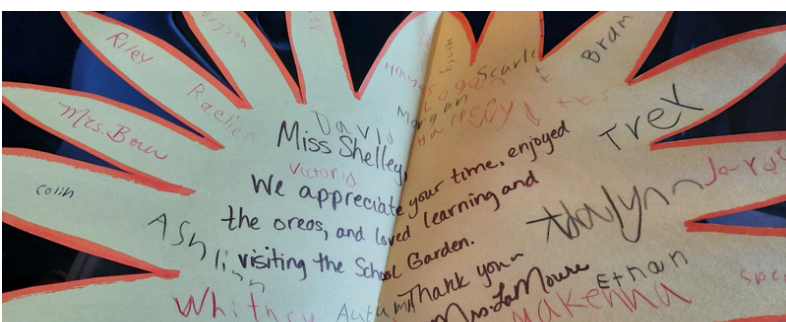
*Salmon School Garden Committee Member, Shelley Lowder, takes us along for a day of planting sunflowers in the Salmon School Garden with Pioneer Elementary first graders...*



The morning of May 22nd, watching the snow coming down and thinking, "it is springtime." That morning at 8:35 the first class of first graders were coming to the school garden to plant sunflower seeds and it's snowing. No problem, we'll all gather in the big warm greenhouse. The greenhouse is full of plant starts that time of year and they are kept warm and growing happy getting ready for the Plant Sale. The children arrived at the garden a bit cold and very excited. As we stepped inside the high tunnel they were amazed at all the plants inside and how warm it was.

Sunflower story was read, cookies shared and by the time it was to plant the seeds the sun started shining, clouds moved away and it turned into a beautiful morning for planting. The children then toured the garden, said "hi" to the chickens and then it was time to go back to class. Smiles on their faces, bit of dirt on their hands and a fun, informative time was had.

So thoughtful of the teachers and children to make the absolutely best thank you card ever. Volunteering at the Salmon School Garden is so rewarding.



**Interested in Volunteering?**

Reach out to us on social media, email [salmonschoolgarden@gmail.com](mailto:salmonschoolgarden@gmail.com) or join us for one of our Community Days to learn about volunteer opportunities with the Salmon School Garden!

# Annual Working Lands Celebration

Lemhi Regional Land Trust (LRLT) hosted our annual Working Lands Celebration June 20th at the Salmon Elks' Lodge. The evening featured dinner cooked by the Elks' Lodge and LRLT board members, cupcakes for dessert by Kayla's Cakery, an update from LRLT Executive Director, Charli Williams, live music by 93 North on the patio and bidding on a wide variety of silent auction items.

The LRLT staff so appreciates the support of everyone who sponsored the event, donated, purchased and bid on auction items and everyone who attended. 2025 is our 20th anniversary and we have some big plans for our Working Lands Celebration and hope you'll be able to join us in celebrating TWENTY YEARS of private lands conservation in Central Idaho!

## Thank you to Our Sponsors!

Teton Toyota • Teton Volkswagen  
Kristin & Mark Troy • Kyra Povirk & Dave Lingle  
Bob & Nancy Russell • Revival Gold  
Salmon River Chiropractic  
Gary & Tamara Power • Ace Hess  
Mike Dougherty & Jane Dougherty Sandstrom  
Norm & Marie Ando • Perpetua Resources  
Norm & Marie Ando • Jody Brostrom

## Whats New at the Land Trust?

- Four conservation easements in progress conservation easements
- Two new conservation easements are in the development phase for 2024 funding applications
- Fielded twelve landowner inquires so far in 2024
- Currently partnering on two statewide applications that would provide new funding opportunities for conservation easements



## Fact or Fiction?



*Fact or Fiction: Conservation easements turn private land into defacto wilderness areas.*

*Fact or Fiction: Conservation easements were created to conserve forests as well as farm and ranch lands.*

**Fiction:** Across the over 2.5 million acres conserved by conservation easements you'll see cattle and pastures, irrigation pivots, agricultural outbuildings and equipment, timber harvests, four-wheelers, horses, machinery, crops and more. An important goal of a conservation easement is to help keep families and their forest or agricultural operations economically viable now and into the future.

**Fact.** Conservation easements are designed to keep land open and producing all the goods and services that flow from open land, clean water, wildlife habitat, forest health and wood products, farm and ranch products, scenic views and much more. Land trusts have been quite successful at working with large industrial and small and family lumber companies on projects that provide forest conservation and timber volume to mills.

## Volunteer Opportunity!

Lemhi Regional Land Trust is always looking for volunteers!

Did you know that, in addition, to our Board of Directors, LRLT has committees made up of community members and board members? Our committees include land protection, finance, fundraising and stewardship.



If you're interested in volunteering for a committee, please email Charli Williams at [charli@lemhilandtrust.org](mailto:charli@lemhilandtrust.org) or call our office at 208-756-8879

*We ♥ our Volunteers*



# Welcome to the Garden, Moose!

Moose Griswold is a new addition to the Salmon community, moving here from Sandpoint, Idaho. This year she will be working as the Salmon School Garden Manager. With a background in Cultural Anthropology, Herbal Medicine, and 10 plus years of experience growing food on small scale farms and cooking in restaurants and community kitchens, Moose has a passion for connecting with people through food and the natural world. We are so excited to have Moose in the garden!

## Community Days at the Salmon School Garden

FRIDAY, AUGUST 9TH, 9 A.M. - 11 A.M.  
FRIDAY, AUGUST 23RD, 9 A.M. - 11 A.M.

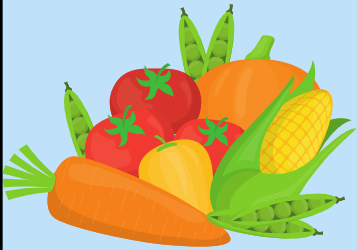
Help us weed, maintain the Garden & harvest produce for the Lemhi County Farmers' Market!



## Want to Buy Produce?

Produce from the Salmon School Garden can be purchased every Saturday through the end of September from 9 a.m. to 1 p.m. at the Lemhi County Farmers' Market Community Booth!

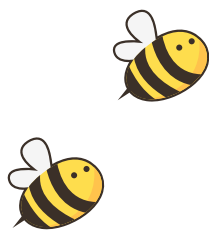
\*\*Produce availability may be limited when school is back in session\*\*



## Outdoor Not School Garden Day Camp!

Ages 5-7  
\$15  
Ages 8-12  
\$10

(Partial scholarships available if adult attends with 5 - 7 year olds)



Lunch Provided by Lemhi's After School Promise!

Payment is due to the Extension Office the Thursday before each camp!

9 A.M. - 12:30 P.M.

SALMON SCHOOL GARDEN  
1309 MINNIE STREET

CALL THE LEMHI COUNTY EXTENSION OFFICE TO REGISTER ONE WEEK BEFORE EACH CAMP!

208-742-1697  
LEMHI4H@UIDAHO.EDU



JULY 24TH - ARTS & CRAFTS IN THE GARDEN  
JULY 31ST - JAMS & JELLYS IN THE GARDEN  
AUGUST 7TH - CONSTRUCTING CATAPULTS



**I** University of Idaho  
Extension  
Lemhi County

# Salmon School Garden 10th Anniversary!

Thursday, August 6th, 2024 from 6P.M. - 8P.M.

The Salmon School Garden  
1309 Minnie Street - behind Wild Side Sports

Join us for lemonade & desserts to celebrate 10 years of getting our community's youth outdoors, digging in the dirt & growing their own food!



Conserve

Summer 2024

Lemhi Regional Land Trust  
105 S. Center Street  
Salmon, Idaho 83467

## Lemhi Regional Land Trust

[www.lemhilandtrust.org](http://www.lemhilandtrust.org)  
105 S Center Street  
Salmon, Idaho 83467  
(208)756-8879

Click "Donate" or scan the QR code  
below to make a contribution to  
LRLT!



Lemhi Regional Land Trust



@lemhilandtrust



## Salmon School Garden

[www.salmonschoolgarden.org](http://www.salmonschoolgarden.org)  
1309 Minnie Street  
P.O. Box 382  
Salmon, Idaho 83467

Click "Donate" or scan the QR code  
below to make a contribution to the  
SSG!



The Salmon School  
Garden Project



@salmonschoolgarden

